

Digital Art studio



Golden Pixel is a digital art studio. We create interactive, luminous works of art from a simple element:

the human-sized pixel.



Golden Pixel in figures...

These figures give an overview of what we have achieved over the past year: collaborations, engaged viewers, and shared experiences...

1
years in existence



20
collaborations with artists,
schools, and institutions



2000

players gathered in just three days
during an interactive event



5000

viewers discovered and activated
our installations



SUMMARY

1. Concept

2. Artistic installations

3. Technical implementation

4. CSR approach

5. About the studio

1. Concept

**When images are perfected,
their pixels disappear.**

We bring pixels back into focus by
enlarging them to human scale,
creating very low-resolution images.

Our installations reveal pixels and
give viewers the opportunity to
create their own digital images.



2. Artistic installations

Our installations combine artistic research and technological expertise.

They can occupy **public spaces**, **accompany a musical performance**, **transform a monumental facade**, or **illuminate an interior**.

Each one is designed to interact with its environment and invite the public to become part of the experience.



PIXEL4PEACE

Art installation

An interactive cube measuring 4 meters on each side to celebrate the 100th anniversary of the Cité internationale universitaire de Paris.

Collective participation

Using their phones, viewers could color the pixels of the cube in real time. Over three days, several thousand players took turns around the installation.

Immortalizing the artwork

The creations could be printed instantly, capturing the moment before a new player transformed the image in turn.



ERROR 441

monumental installation

*441 windows on the façade of the École des Arts
Décoratifs transformed into a giant interactive screen.*



PIXEL WAR

On the façade, each spectator could defend their space or conquer new territory.

Between rivalry and cooperation, the façade became a collective and creative playground.



250 students contributed

The images displayed on the façade were created in advance by the school's students. During the event, each appearance was eagerly awaited, transforming the event into a great collective work.



1,200 spectators gathered

This event, open to all, brought together 1,200 people. Thanks to the DJ set, the façade was transformed into a living stage where pixels vibrated to the rhythm of the sound.



PXL ROOM

Set design

A DJ set by Gaspacho Rec. at Le Petit Bain illuminated by a luminous, pixelated scenography.

Pixels in music

Each pixel followed the beat of the music. The light, generated live by our software, transformed beats and drops into visual explosions.

Modular structure

The PXL Room transforms itself according to the context. For this installation, it was designed with the Gaspacho collective to reflect their artistic universe.



LIGHTING PARTITIONS

Lighting design

Lighting partitions created with Procédés Chenel to celebrate the company's 137th anniversary and showcase its expertise.



LIGHT +
by
Grégoire Borach

pendulaire coloré de 185 cm de haut par 15 cm de large
normalisable. La structure est en peuplier contreplaqué
leur découpé à l'aide d'une CNC. La structure accueille
source lumineuse. Le diffuseur est une double paroi en
60gr blanc et de 60gr coloré « à la carte ». Le diffuseur
structure en peuplier à l'aide de velcro mâle / femelle. Light +
ilité et la résistance d'une structure en bois à la légèreté
à la souplesse d'un diffuseur en Drop Paper.



ENTRELACS JOURNALIERS
by
Claire Buel

Cette collection de luminaires s'inspire des rayons de soleil qui
traversent nos fenêtres et qui déposent ainsi des nuances colorées
riches et variées sur nos murs. Celle-ci peaufine les encadres par
l'ombre de la trame des fenêtres, créant un motif d'entrelacement. Des
tableaux sphériques, variés tout long de la journée, apparaissent alors
pour quelques instants, dans nos intérieurs. Ces luminaires tendent à
recréer ces instants poétiques. Ils sont composés de lames de plexiglas qui
se superposent. Lorsque le luminaire est éteint, on peut observer une
composition colorée qui, une fois allumée, s'anime. Les couleurs et les
trames s'entrelacent. La gamme colorée est inspirée des différentes
nuances de couleur que nous pouvons observer dans le ciel tout au
long de la journée, d'un matin d'hiver, à un coucher de soleil d'été. Il est
alors possible de composer différentes combinaisons colorées et
lumineuses. Poétiques et délicats, ces luminaires apportent une
ambiance douce en intérieur.



A shared vision

Procédés Chenel and Golden Pixel designed these lighting partitions together, combining their architectural expertise with our mastery of lighting.

❖. Technical implementation

Each pixel is a separate piece, designed and manufactured in our workshop.

When assembled together, they become monumental screens or more intimate structures in keeping with the artwork they accompany.

Behind their apparent simplicity, craftsmanship combines design, electronics, and software to ensure reliable and accurate devices.



Modular system

Infinite combinations

Our modular system forms the backbone of every installation. Designed to be assembled, it can be used to create a wide variety of shapes, from monumental to intimate.

Rapid deployment

A simple and robust mechanical assembly facilitates assembly and disassembly. Depending on the scale of the project, an installation can be deployed in a few hours for the smallest structures, or in a day for the largest.

The times indicated apply to our modular installations. When it comes to a custom-made work, such as an entire facade, we design a specific system that requires specific preparation.



Interactive software

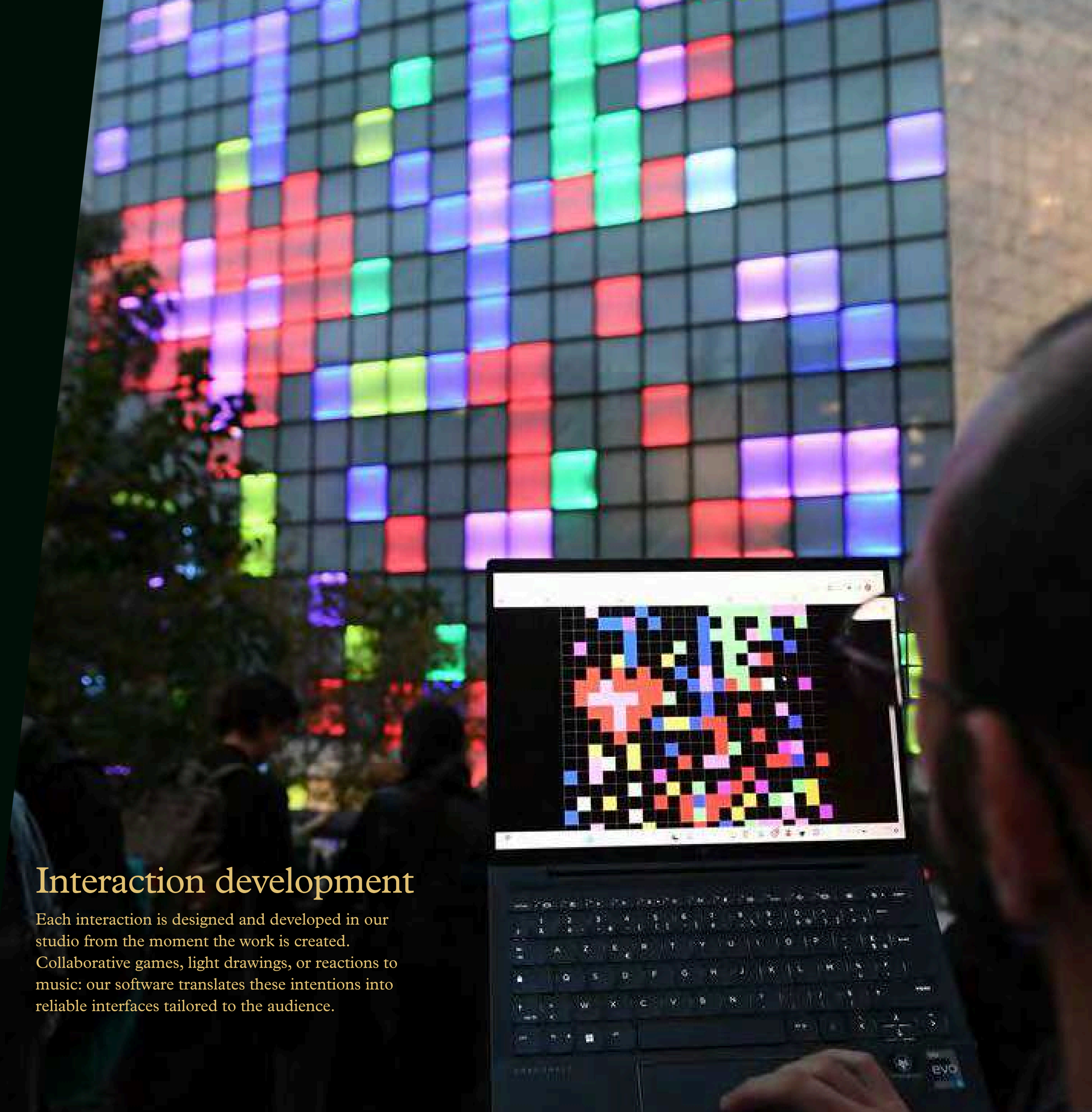
The heart of the system

At the center of our installations, this software orchestrates the lighting and coordinates each pixel. Designed as a comprehensive interface, it combines technical functions and artistic tools in a single system. Most of our creations are based on it.



Interaction development

Each interaction is designed and developed in our studio from the moment the work is created. Collaborative games, light drawings, or reactions to music: our software translates these intentions into reliable interfaces tailored to the audience.



Electronic system

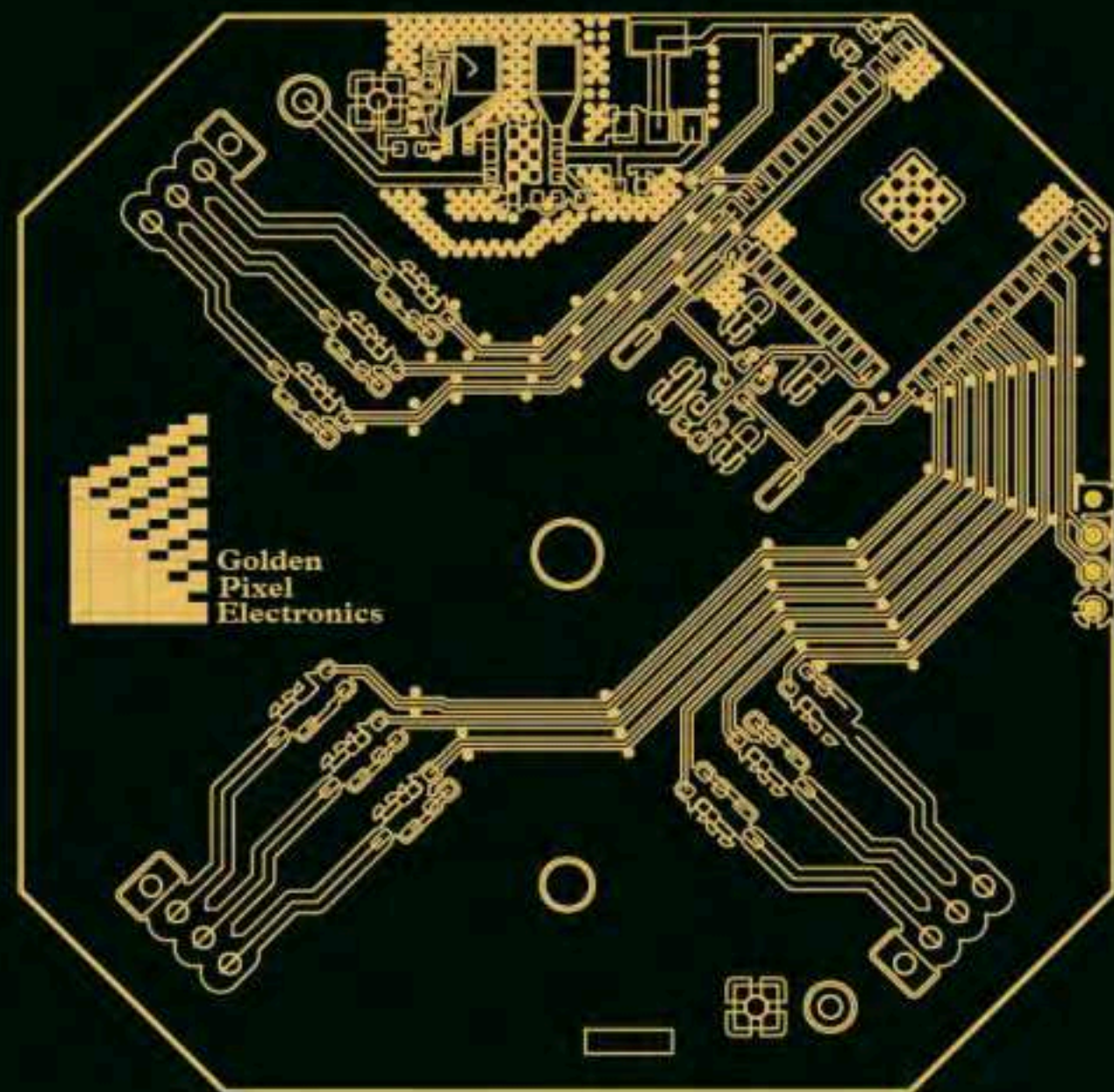
A network of pixels

Our electronic cards are the vital organs of our installations and work in conjunction with our software. Their network architecture makes each card autonomous: they control the pixels independently. This design facilitates deployment and ensures the secure operation of each installation.

We also take care of the network infrastructure to ensure a turnkey, stable, and high-performance installation.

Smooth animations

With a smooth 60 frames per second, our cards guarantee responsive animations. They convert music and audience movements into light in real time, without any lag.



4. CSR approach

Golden Pixel is committed to reducing the environmental impact of its facilities and increasing the transparency of its practices.

Our approach is based on three pillars: **designing energy-efficient devices, prioritizing artisanal and sustainable expertise, and sharing our systems as open source.**

These commitments guide all of our achievements and structure the way we work.



Designing differently to consume less

Our lighting devices are designed from the outset to have low energy consumption and a long service life. They use low-density LEDs, which reduces energy consumption by an average of 40% compared to a conventional LED screen.

Our modules are sturdy and reusable: each part is designed to withstand around 20 installations. When repairs are needed, only the faulty part is replaced, never the entire device.

"For the same surface area (1 m²) and over three days of events (24 hours of lighting), our low-density device (≈ 200 W/m²) consumes 4.8 kWh, which is $\approx 43\%$ less than an average LED advertising screen (8.4 kWh). The associated emissions are 0.154 kg CO_{2e} compared to 0.269 kg CO_{2e}."

Craftsmanship and expertise

We pride ourselves on our artisanal approach to technology. Rather than buying off-the-shelf solutions, we design and manufacture our own systems. This complete control over everything from electronics to design guarantees the quality and adaptability of our devices.

We carefully select the quality of our materials and suppliers, prioritizing France and locations close to our workshop in order to favor short supply chains and collaborate with responsible partners.

*Our suppliers : [Procédés Chenel International](#),
[Systeal](#)*

An open source policy

We believe that technology should be accessible and shared. That's why we publish our source codes and manufacturing plans on open source platforms.

This approach allows everyone to understand our technologies. It is at the heart of our philosophy: to create devices that are not closed boxes, but tools open to dialogue and collaboration.

*Find all our projects and their codes on
our [Github page](#):
[Golden Pixel Company](#)*

5. About the studio

Founded in 2024, Golden Pixel brings together artists and engineers eager to explore pixels in new ways. Our team shares the same belief: **every project should be a technical feat, an aesthetic experience, and a moment to be shared.**





website :

goldenpixel.company

adress :

11 rue Samson, 75013,
Paris, France

e-mail :

goldenpixelcompany@gmail.com

Hugo Bijaoui

*Artist & co-founder
tèl : +33 6 75 39 62 76*

André Cardenas Marquina

*Managing Director and co-founder
tèl : +33 7 68 05 62 49*

Lorris Sahli

*Artist and software and hardware engineer
tèl : +33 6 86 76 43 96*

They support us

ARTPOINT



CITÉ
INTERNATIONALE
UNIVERSITAIRE
DE PARIS

PROCÉDÉS CHÉNEL[®] INTL.
Architectures de papiers

ellia
art gallery

école
des arts
décoratifs
paris

Lan~:

